

# Innovation statistics in Albania

**Valmira Bebri**

Head of Structural Statistics Unit

**Margarita Muho**

Expert at Methodology Unit

**Gladiola Baja**

Head of Project Coordination Unit

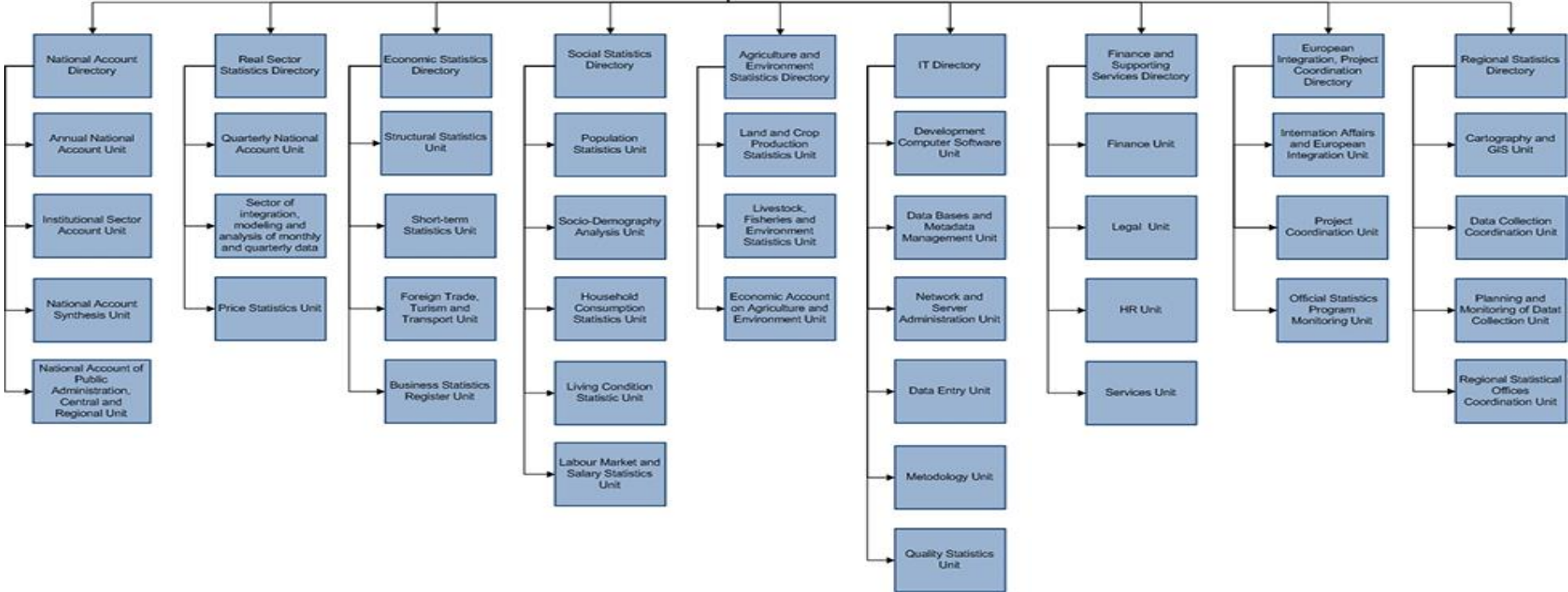
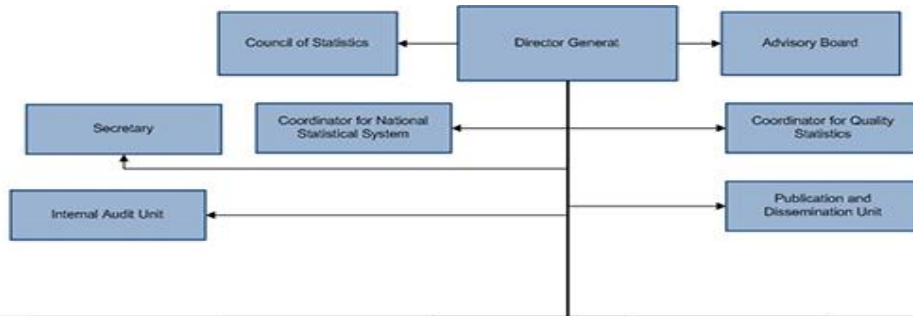


- The statistical service had not been established until Albanian State was proclaimed in 1912.
- The first statistical office was opened in 1924. It used to work out economic data on the Ministry of Public Affairs and Agriculture.
  - The activity of this office was limited to agriculture inventories as well as in a few statistics on industry, trade, export-import and prices.
- The statistical service was for the first time institutionalized by the decision no.121, dated. 8.04.1940.
- Nowadays, this system is an independent institution under the authority of Council of Ministers.



# Organisational Structure

- 9 Directory
- 38 Units
- 216 full time employees



First attempt for Innovation Statistics has been done According to the One UN Programme in Albania, UNESCO contributes by supporting institutions and the public sector to respond to the requirements of the EU accession process, including the strengthening of the national STI capacities.

- A first pilot survey on R&D statistics in the public sector has been performed in 2009.
  - Survey was conducted by Ministry of Education
  - Questionnaires have been elaborated and sent to 171 public institutions in Albania.
  - Of the 171 sent, 57 were received.
  - Of those, 20 were not completed, as the respondents considered that they had no STI statistics to declare.

Since a poor result was achieved, a second pilot survey on Research, Development and **Innovation** (RDI) statistics was launched in **2013**, expanded to the private sector.

---



- The first systematic collection of Research & Development and Innovation (R&D&I) statistics in Albania started in 2013 through the collaboration between UNESCO, INSTAT and ARTI.
- While the rule is that R&D and Innovation Statistics are usually carried out as separate surveys, it was found as appropriate for Albania to combine the two surveys of the business sector into one as this round was treated as a pilot survey.



# Innovation Survey, Conducted in 2013

---

- **Questionnaires** were built in cooperation with UNESCO experts based on the recommendations of the handbook "Frascati" for scientific research and development and the manual "OSLO" for Innovation.
  - **The information gathered was divided in three parts:**
  - A- General information on companies / public institutions - identification, economic activity, economic and financial data
  - B- Information on the scientific research-development and analysis by type of research (basic, applied, experimental), activity by sectors, cooperation with other contractors, the number of employees, of which how much women, education of employees dealing with research, as well as some predictions for the future in this regard;
  - C- Information on innovation - analysis of new technologies, new methods of logistics, operations updates on products and goods companies have issued, analysis of information to improve service, accounting, maintenance, etc., that companies take for the performance of their activities.
  - The questionnaire was designed in two types based on the statistical units:
    - I- The Enterprises Questionnaire:
      - A. The overall situation;
      - B. Scientific research and development;
      - C. Innovation.
    - II- Public institutions (Public, HEI and NPI) Questionnaire:
      - A. The overall situation;
      - B. Scientific research and development;
- 



- Sampling was conducted at random and included 882 companies and a list of 170 public institutions.
- If one of the companies refused to answer or was sleeping or closed, a reserve list of enterprises was used to replace this enterprise
- Process on Field - August-September 2013
- Questionnaires used can be accessed in the link below:  
<http://www.instat.gov.al/en/aboutus/activities/other/survey-on-scientific-research-development/>



Based on the agreement with UNESCO

- ARTI was responsible to conduct a postal survey for the 170 public institutions & UNESCO sent to INSTAT a suggestion on the sample size and stratification then INSTAT created the sample
- INSTAT was responsible to conduct a face to face interview with enumerators for 882 enterprises
- Training of the interviewers and all materials need for the field work were prepared by INSTAT staff
- INSTAT was also responsible to make the data entry for all surveys and to transmit them to UNESCO
- A Greek expert was contracted by UNESCO to make
  - Statistical elaboration of the results
  - Preparation of a final report including the results of both the public and the business sector
- Process on Field was August-September 2013
- Questionnaires used can be accessed in the link below:

<http://www.instat.gov.al/en/about-us/activities/other/survey-on-scientific-research-development/>





# Total population, 2013

---

- The total population of firms employing 10 or more people, as registered by Instat, was 2,113 companies.
- Taking into consideration the Eurostat guidelines for the Community Innovation Survey (CIS), it was decided to exclude microfirms.
- The budget available for this pilot survey limited the number to 882 face-to-face interviews.
- The total population was composed of 76,7% smaller companies (10 to 49 employees), 19.2 % medium sized ones (50-249 employees) and 4.1% larger companies.
- If one of the companies refused to answer or was sleeping or closed, a reserve list of enterprises was used to replace this enterprise.
- There was no need for a non-response analysis, since the face-to-face interviews organised by INSTAT succeeded to cover almost 100% of the sample.



- The sample was selected using the method of stratified random sampling with two stratification variables.
- NACE 2 – digit classification (31 individual codes of groups and aggregates, following the guidelines of Eurostat for CIS-2010).
- Enterprise size (3 categories in terms of number of employees, namely 10-49 employees, 50-249 employees and more than 250 employees).
- This indicates a full coverage of large companies, 39.05% of the population of small companies interviewed and 40.15% of medium sized companies.



# General characteristics

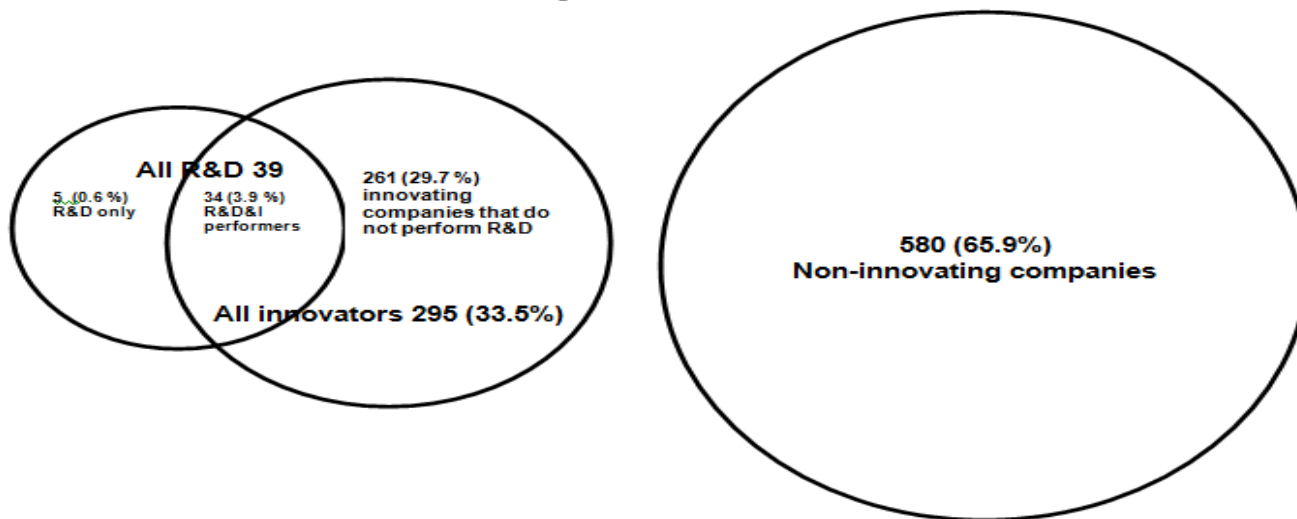
---

- There were responses to the 880 questionnaires.
- *In terms of ownership:* The largest share of the respondents belonged to Private Albanian Enterprises (77.8%), followed by 16.7% of companies with some (or full) foreign participation and 5.5% state budgetary or non-budgetary enterprises.
- *In terms of legal form:* The majority of the companies (82.7%) were Limited Liability Companies (LLCs)
- *In terms of geographical markets* the majority of companies surveyed are active in their region or locality; half of the companies are selling in the national market and about one third export to the EU Member States or the EU candidate countries.



# Results, 2013

- The business sector in Albania is not particularly innovative and has very limited research activities. Based on 880 responses the characteristics of the respondents were as follows:



# Current Situation

---

- Based on the five years Official Statistical National Program, 2012-2017, INSTAT was obliged to start a full scale survey on Innovation and R&D.
- The periodicity of them will be once in two years.
- Two rounds of Innovation Surveys are conducted respectively in 2015 & 2017 and one round of R&D Survey is conducted in 2016, following the same methodology and recommendations as in 2013.



# Current Situation

- March 2015 (1527 enterprises are surveyed)
- December 2017 (1543 enterprises are surveyed)

INOVATION		
	MARCH_2015	DECEMBER_2017
SIZE 1 [ 10-49] Employees	74,9%	77,6%
SIZE 2 [50-249] Employees	21%	18,5%
SIZE 3 [ 250 +] Employees	4%	3,8%

- Based on Nace Rev.2 classification in the following domains:

0509 1012 1315 1618 1900 2000 2100 2200 2300 2400 2500 2600 2730  
3133 3500 3600 3739 4600 4951 5253 5800 5960 6100 6200 6300 6400  
6500 6600 7100 7200 7300



# Current Situation

---

- Paper based survey.
- Face to face interview with enumerators.
- INSTAT organize a training for enumerates and spread different field work documents:
  - Manual of enumerators
  - Enumerators Tasks
  - Template of questionnaire
- During field work, INSTAT staff monitor the work done by enumerates.



# Difficulties faced

---

- As INSTAT was not part of the first elaboration of data done by UNESCO, we have not experience on data processing.
- Lack of experience in data validation and elaboration has made impossible production of Innovation Statistics in Albania.
- INSTAT has planned to have an expertise from SIDA project for helping INSTAT's staffs on data validation and elaboration of Innovation and R&D statistics during 2018.





# Thank you for your attention!

## Questions?

For further information do not hesitate to contact  
us by email:

Gladiola Baja [gbaja@instat.gov.al](mailto:gbaja@instat.gov.al)

Valmira Beberi [vbeberi@instat.gov.al](mailto:vbeberi@instat.gov.al)

Margarita Muho [mmuho@instat.gov.al](mailto:mmuho@instat.gov.al)

